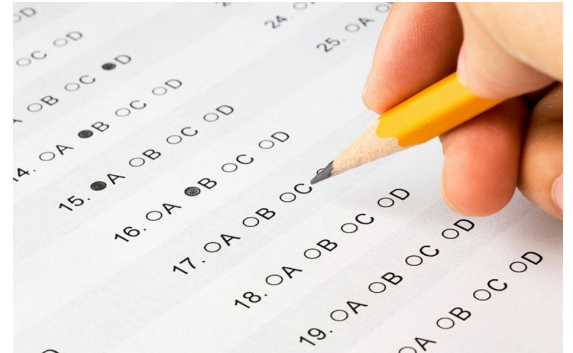


Multiple Choice Tips

Passage

- Look for info before the passage
- Read endnotes (definitions, context, facts about allusions)
- Underline important quotes
- Circle subjects
- Abbreviate any devices (Pathos = P).
- Label tone quickly to the side



Questions

- Underline or circle key words
- Figure out if the question refers to the entire passage or just certain lines
- Cross off any answers that are for sure wrong (process of elimination)